

**OWNER:**  
 SHERMAN WAY - WEST HILLS PARTNERS, LLC  
 22801 VENTURA BLVD. SUITE 111  
 WOODLAND HILLS, CA. 91367

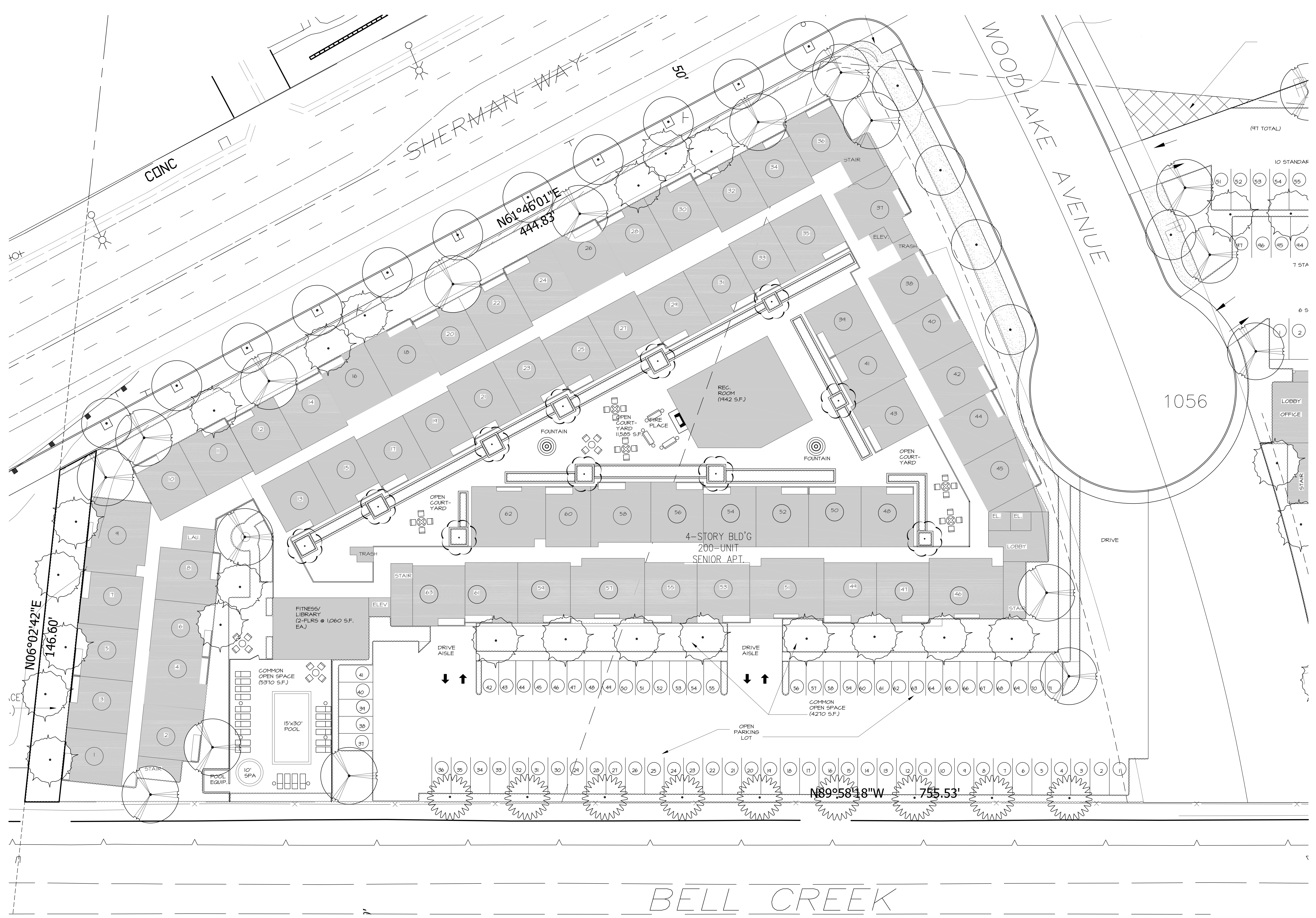
**PROJECT:**  
 WEST HILLS SENIOR  
 SENIOR CITIZEN HOUSING  
 23200 SHERMAN WAY  
 WEST HILLS, CA

These drawings are not final and shall not be used for construction purposes until signed by Susan E. McEowen, Landscape Architect #2180. These plans and all contained thereon are original, unpublished work and may not be duplicated, published or used in whole or part without prior written consent by Susan E. McEowen.

**SHEET TITLE:**  
 PRELIMINARY LANDSCAPE  
 PLAN

START DATE:	APRIL 28, 2010
REVISION DATE 01:	XXX
REVISION DATE 02:	XXX
REVISION DATE 03:	XXX
DRAWN BY:	SEM
CHECKED BY:	SEM
FILE NUMBER:	2010_4_3

**PL-2**  
 WEST HILLS SENIOR



BELL CREEK

**PRELIMINARY LANDSCAPE PLAN**

SCALE: 1/16" = 1'-0"

